



THE **Leys**

C A M B R I D G E

GCSE &
A Level
Pupil Art



GCSE

GCSE
Pupil Art



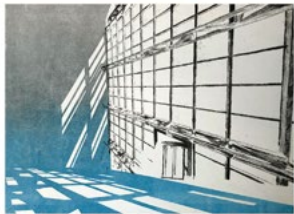
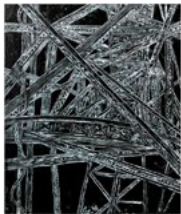
By Annabel L

Annabel used charcoal and paint to capture moments of nature intertwined with portraiture.



By Annie D

Annie created a series of portraits exploring ideas of family through painting and printmaking.



By Annika G

Annika explored different printmaking methods to capture the interaction of light and structure in architecture.



By Bethany N

Bethany focused on studies of birds and played with distortion, paint and print.



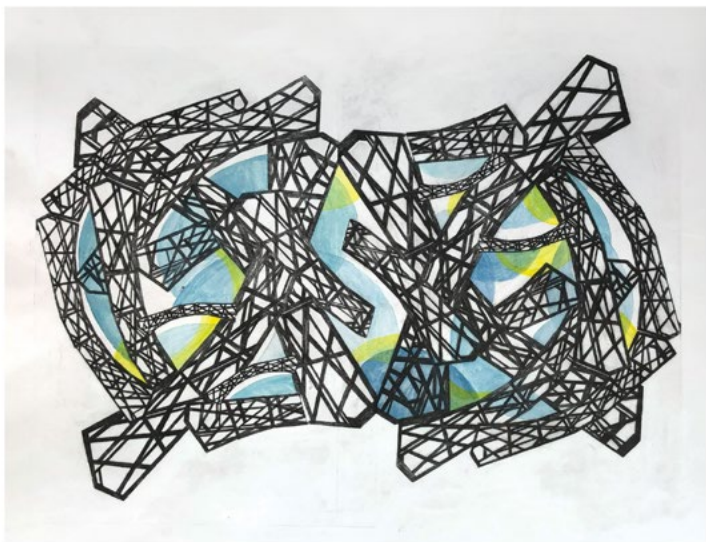
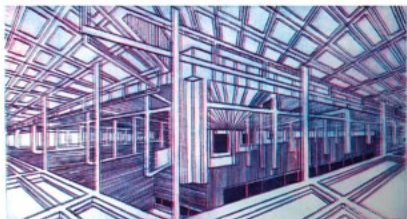
By Bianca D

Bianca reflected on the contrast between built structures and nature, creating intricately delicate pieces.



By Cosmo B

Cosmo used paint and print to explore the idea of the family portrait.



By Eloise G

Eloise took inspiration in the graphic shapes and structures of industrial architecture to create abstract compositions.



By Emily B

Emily used paint and drawing to create fractured portraits that play with ideas of presence.



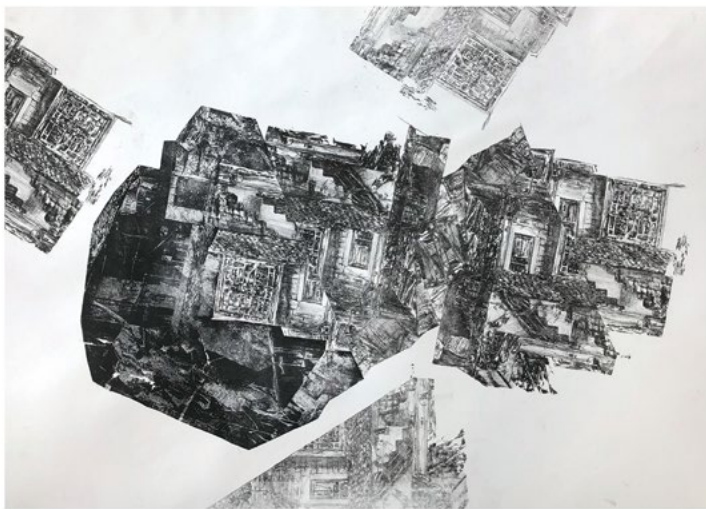
By Emily C

Emily linked colour theory to flowers with orange nasturtium flowers sitting inside blue vases.



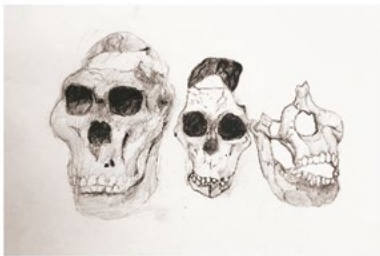
By Emma P

Emma represents to warm, glossy, sticky textures of figs through felting, stitching and painting.



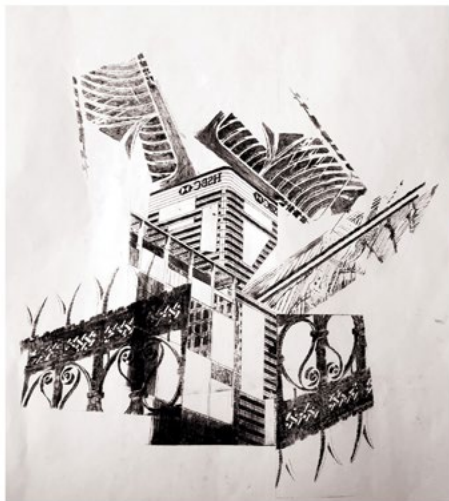
By Eric X

Eric has captured the beauty in traditional rural Chinese dwellings that have fallen into disrepair.



By Hans Z

Hans portrayed the changes of the human skull through time from the earliest species to modern homosapiens.



By Henry H

Henry created architectural studies in print while playing with perspective and collage.



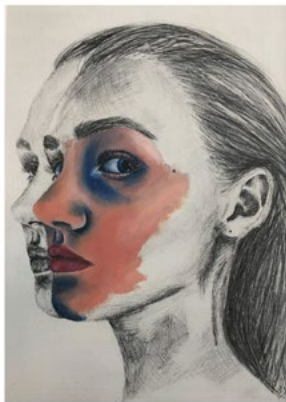
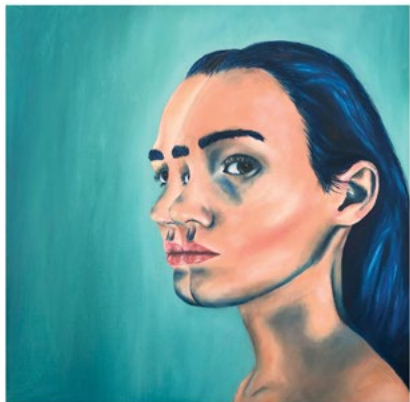
By Iona A

Iona explored the jewelled analogous colours of pomegranates using felt, stitching and clay.



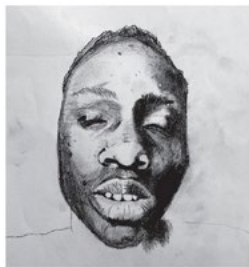
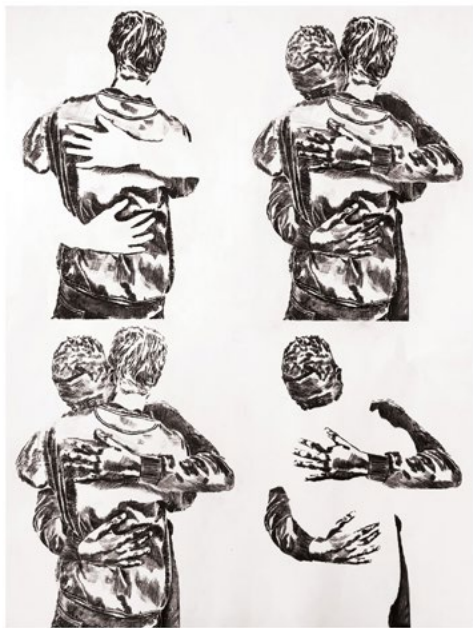
By India F

India used charcoal to investigate drawing and skeletal form.



By Jess H

Jess used paint to explore overlapping moments captured in drawing and painting.



By Louis Y

Louis explored themes of friendship and isolation through print, looking at body language and negative space.



By Louisa H

Louisa created family portraits using painting, printing and drawing.



By Lulu B

Lulu interpreted the vertebrae for her theme through the skeletal structures of dried leaves.

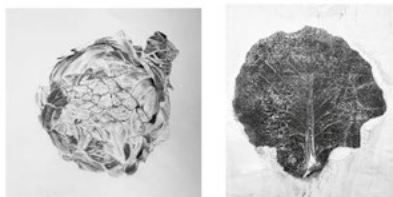


By Misha W

Misha explored masks and portraiture using printmaking and painting.

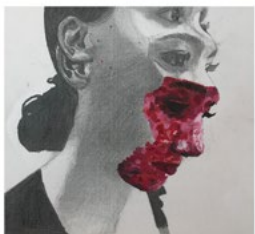


By Qiuyu C
Qiuyu played with traditional architecture using
printmaking and drawing.



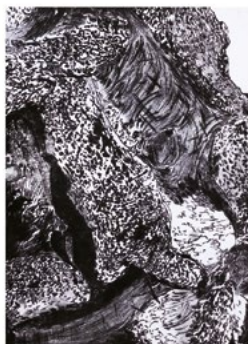
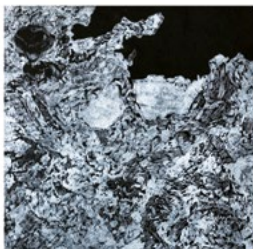
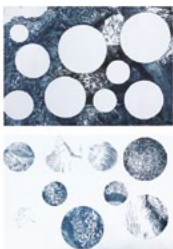
By Rosie S

Rosie explored the delicate structures and complex forms of cabbage leaves.



By Simsi O

Simsi created multi-headed portraits that captured different moods using painting and drawing.



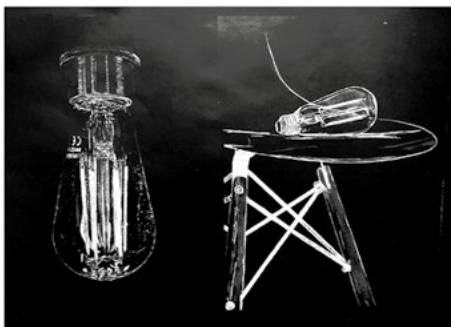
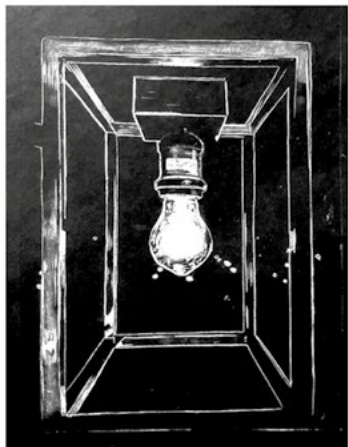
By Sam D

Sam looked at the fractured, holey textures of decomposing bones for his 'skeletal' theme.



By Tania E

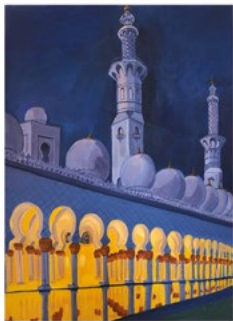
Tania explored the surface patterns and reflections of water in multi-media outcomes through the 'green' theme.



By Thomas HJ

Thomas represented the lightbulb as an 'object'
symbolic of hope and light.

SET TASK FINAL PIECES



1. Annie D, 2. Thomas HJ, 3. Annabel L, 4. Tania E, 5. Annika G

SET TASK FINAL PIECES



1. Eric X, 2. Emily B, 3. India F, 4. Beth N, 5. Lulu B

SET TASK FINAL PIECES



1. Emma P
2. Quiyu C
3. Bianca D
4. Simsi O
5. Rosie S

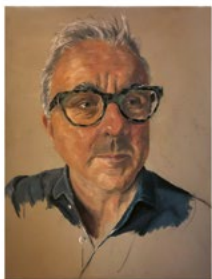


SET TASK FINAL PIECES



1. Hans Z, 2. Jess H, 3. Sam D, 4. Misha W, 5. Eloise G

SET TASK FINAL PIECES



1. Cosmo B, 2. Louis Y, 3. Emily C, 4. Louisa H, 5. Henry H, 6. Iona A

A Level

A Level
Pupil Art

SELECTION





By Adam H

Adam's work explored the transition from childhood to adulthood through large-scale drawing, printmaking and projection.

SELECTION

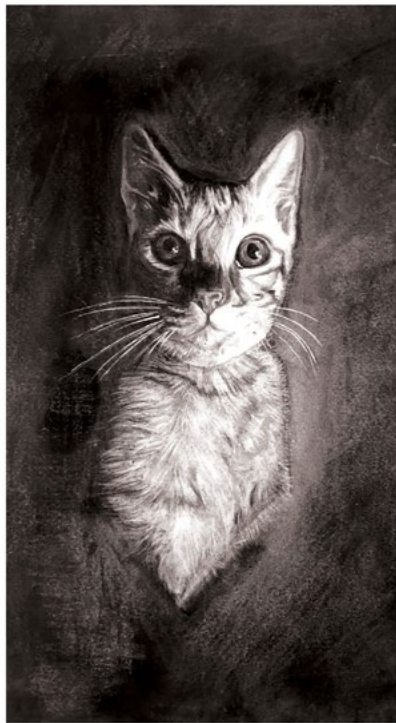




By Alya C

Alya used print and fashion to question the boundary between life and death exemplified in the life cycle of a butterfly.

SELECTION

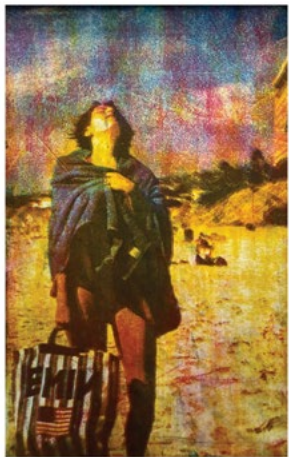




By Amelia M

Amelia was interested in the activism surrounding animal rights, using print and graffiti to communicate her ideas.

SELECTION





By Bea G

Bea used printmaking to explore captured moment of joy.

SELECTION





By Charles D

Charles explored the insect-like qualities of twisted humanoid form through distortion, paint and print!

SELECTION



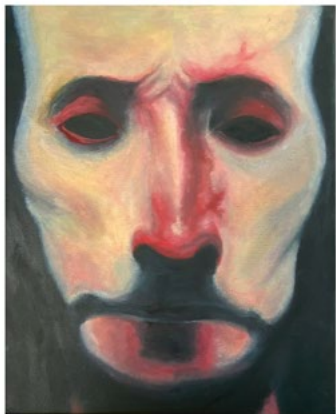


By Emily B

Emily's flesh-like forms looked at what lies beneath the surface of human form through paint, drawing and print.

SELECTION

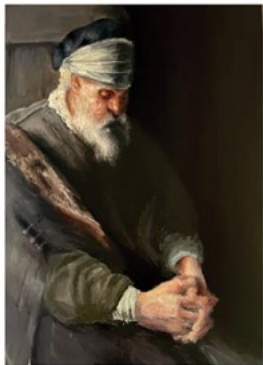




By Francesca N

Francesca was focused on the edge of sanity using the human figure and paint.

SELECTION

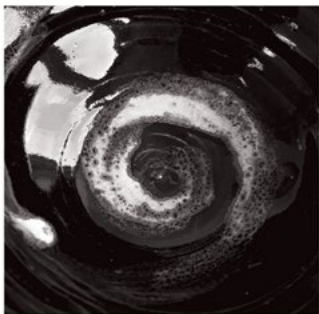




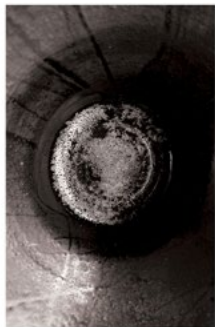
By Gabriel K

Gabriel looked at power and control through portraiture and paint.

SELECTION



FINAL



By India F

India used pottery and drawing to understand the realms of black holes and vortexes.

SELECTION





By Jemima W

Jemima used drawing and the world of cinematography to capture moments of significance.

SELECTION



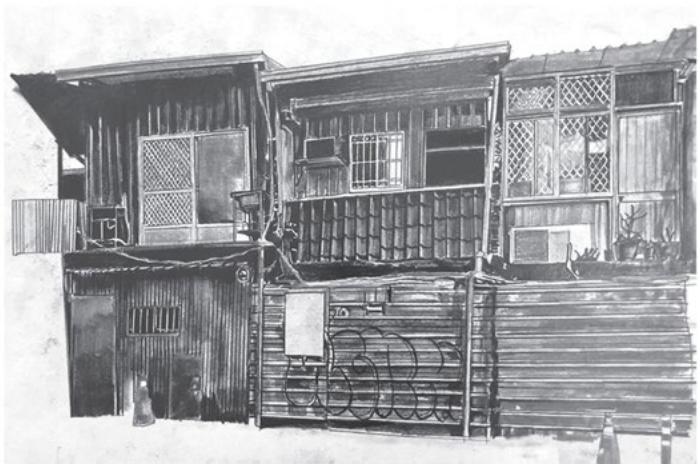


By Jenelle B

Jenelle used printmaking, paint and drawing to create large-scale installations centred around the notion of family portraits.

SELECTION



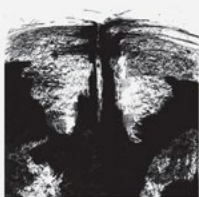


By John W

John looked at the act of destruction through the lens of architecture and paint.

SELECTION





By Laura N

Laura used the medium of dance and printmaking to create large-scale diagrams of movement.

SELECTION





By Michael D

Michael used fashion and print to explore skeletal form through drawing and cyanotype.





By Ruby C

Ruby used portraiture to explore language through painting and drawing.

SET TASK FINAL PIECES



1. Ruby C, 2. Bea G, 3. Emily B, 4. Charles D

SET TASK FINAL PIECES



1. Gabriel K 2. Michael D, 3. Adam H, 4. Amelia M

SET TASK FINAL PIECES



1. Laura N, 2. Jemima W, 3. John W

SET TASK FINAL PIECES



1. Jenelle B, 2. Francesca N

SET TASK FINAL PIECES



1. India F, 2. Alya C

THE **Leys**
C A M B R I D G E



Trumpington Road, Cambridge, CB2 7AD

Tel: 01223 508 905

Email: office@theleys.net

www.theleys.net